

Is Breast Conserving Surgery A Suitable Approach for Early Breast Carcinoma? A Multicenter Study

AWNIS ISMAIL SULTAN¹, MOHAMMED MOHAMMUD HABASH²

¹Department of Surgery, College of medicine, Tikrit University, Iraq

²Department of Surgery, College of medicine, university of Diyala, Iraq

Correspondence to: Awni Ismail Sultan, Email: awnisultan@tu.edu.iq

ABSTRACT

Currently, there has been a tendency to prefer breast-conserving surgery (BCS) over mastectomy (MC). Therefore, this study came to assess whether this is true when compared with mastectomy. This retrospective study included early breast cancer patients who were registered in government and private hospitals in Kirkuk and Diyala governorates during the period from February 2015 to March 2017, and were followed up after surgery for five years. The enrolled patients (women) were set into (2) groups; the first one was for patients treated with BCS, while the second was for patients who underwent MC. As a preliminary result, it was found that out of the total of (172) participants, (72) were in the BCS, and (100) in the MC. Convergence of age groups was observed between patients in both surgical groups. The results proved that the local recurrence rate amounted to about (9%) in patients undergoing BCS and the survival rate was for the same group (97%). Thus, we concluded that the breast preservation approach is an appropriate and successful choice for early breast carcinoma patients.

Keywords: carcinoma, conserving surgery, local recurrence.

INTRODUCTION

Breast cancer has been considered the majority frequently confirmed cancer and one of the prime causes of cancer mortality for women globally. In some countries, it accounts for 1 in 4 types of diagnosed cancers and up to 20% of cancer deaths in women [1-3]. It is worth noting that breast cancer mortality rates are higher in developing countries, and this may be due to poverty, illiteracy, lack of health insurance, as well as late diagnosis [4,5]. However, it has been observed that the incidence and severity of this type of this cancer continues to increase despite the advances in modern treatment strategies, which foreshadows the urgent need to find new methods to improve the good progress and treatment [6,7]. It has been established that long-term survival rates were equivalent between surgical intervention with both mastectomy (MC) and breast-conserving surgery (BCS) for early stage cases of breast carcinoma [8,9].

In the late 20th century, the BCS approach plus radiation therapy was recommended as an appropriate first-line alternative to MC for the greater number of women with breast carcinoma, especially those who are not contraindicated with breast preservation [10,11]. However, in recent years, mastectomy rates have increased and this may be due to conditions related to cancer or the experience of the operating surgeon because many women follow the recommendations of surgeons, their primary source of information about treatment options [12,13]. Generally, breast-conserving approach involves the removal of primary breast cancer with a margin of naturally occurring breast tissue with axillary removal and adjuvant radiotherapy. Irradiation of the remaining breast tissue after surgery is an integration part of BCS to limited the risk of local recurrence [14,15].

Recent researches have proved the merit of BCS plus radiotherapy in improving survival rates compared to MC surgery when treating women with breast carcinoma. [16,17]. Because this is related to the surgical approach, this prompted us to evaluate a cohort of women who had undergone surgical intervention of breast cancer in several centers to evaluate surgical outcomes after BCS or MC.

METHODOLOGY

This retrospective study included (172) patients (women) with breast carcinoma visited breast clinics in government and private hospitals in Kirkuk and Diyala Provinces during the period from February 2015 to March 2017. A complete history and physical examination helped determine the best surgical strategy for each individual patient, and surgeries were performed by qualified and experienced physicians. There are factors that were taken into consideration, such as having a family history, age, morbidity of elderly women, and the difficulty of general anesthesia for some

patients. Besides, the evaluation of bilateral mammography was necessary to choose the type of surgery as well as to assess the presence of other suspicious lesions in the breast tissue. The inclusion criteria included female patients whose ages ranged between 31 and 69 years from both stages (I) and 2, and were followed up until March 2022, who underwent one of two surgeries, either mastectomy (MC) or conservative breast cancer surgery (CB). On the contrary, those who did not meet these criteria were excluded from this study. Over the five years of follow-up, patients were seen in the private surgical centers every three months and had a full checking every year. Few patients died during follow-up, detailed data were registered for all patients, and after verifying the accuracy of those data, they were stored in an electronic data system.. Two types of surgery were performed for the patients participating in the study, first one was conservative breast cancer surgery (CBS) in the form of extended lumpectomy with axillary lymph node removal (for node-positive cases), followed by local axillary radiotherapy. The second surgery was modified radical mastectomy (MC) with removal of the axillary lymph node. Using descriptive statistics, the tabular data were presented as frequencies and percentages (%), by the SPSS program, version (26).

RESULTS

Of the (172) female patients with breast carcinoma for early stage cases only in this study, (72) patients underwent BCS (42%), while (100) patients underwent mastectomy (58%) as displayed in figure (1).

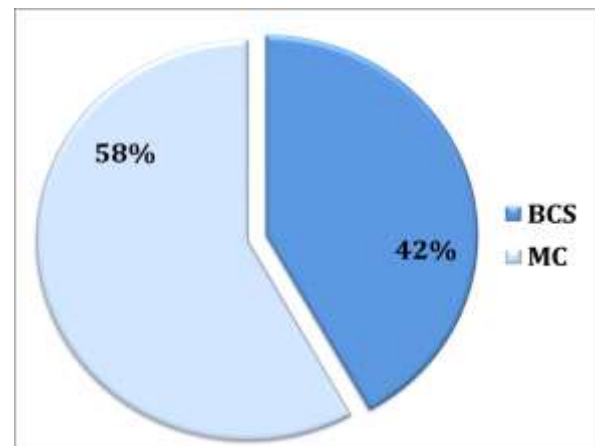


Figure 1: Rates of patients undergoing both surgeries.

In figure (2), the age groups of those patients in both surgical groups have been summarized. It was noticed that the rate of patients in BCT approach within the age of (≤ 39) years old was (11%), while it was in MC (10%). For the elderly (≥ 51), their percentage reached (56%) and (54%) in BCT and MC groups.

Only (15) patients who underwent breast conservation surgery experienced a local recurrence (9%), six of them were treated by wide local excision with safe margins, while three patients requested to complete mastectomy (figure 3).

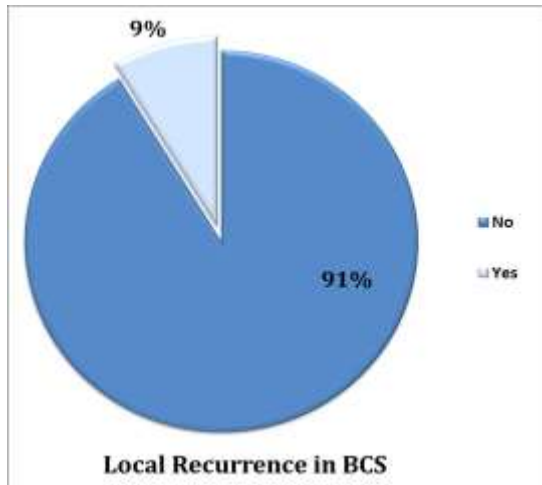


Figure 3: Local recurrence rates in BCS.

Regarding the rate of mortality in both surgeries, it was few as two patients lost their lives in the BCS group (3%) compared to four patients (4%) in the MC group as show in figures (4,5).

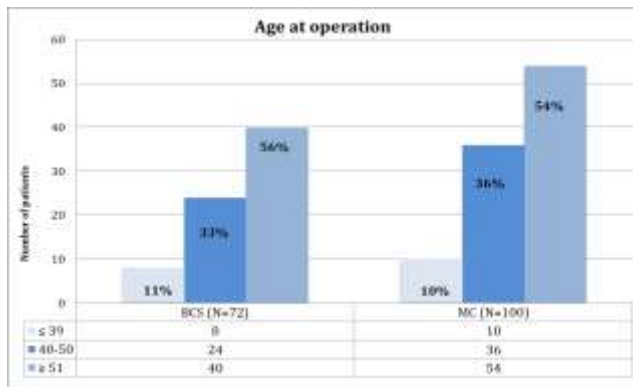


Figure 2: Distribution of patients according to age groups.

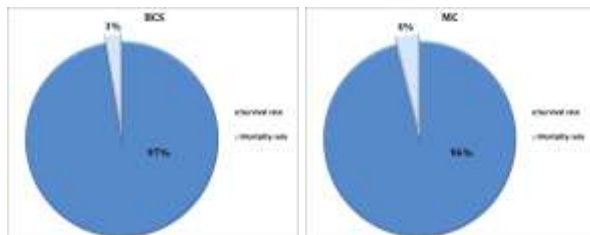


Figure 4: Survival and mortality rates in BCS.

DISCUSSION

Breast-conserving surgery has gained wide acceptance in females with early breast carcinoma due to its cosmetic and psychological advantages, with convincing long-term survival data available [18,19]. Besides, the radiation therapy followed also counteracts

the potential local recurrence after conservative surgery [20]. Several studies have shown that the prognosis of breast wall recurrence after conservative surgery plus radiotherapy is best than recurrence after mastectomy [21,22]. Over the years there have been a growing number of studies suggesting that female breast carcinoma patients who underwent BCT had better overall survival and lower risk of mortality compared to women who underwent MC, regardless of tumors conditions. Whereas, previous randomized trials conducted to compare BCT with MC for patients with breast carcinoma (early-stage cases) have shown parity in overall survival [23-25].

CONCLUSIONS

Through our findings, the local recurrence proportion was relatively few, and with regard to the mortality rate, it was the lowest compared to mastectomy. Therefore, it can be considered that BCT is an appropriate choice for women with breast carcinoma in early stage cases. In (2021) Wang and companions conducted a retrospective research on (1203) patients with invasive micro-papillary breast cancer (just early stage) they found that the survival outcome from the BCT approach was equivalent to that of MC. Besides, they came out with the recommendation of BCT as a standard surgical treatment when both procedures are possible [26]. In a recent population study done by Zhang et al (2021) on (2412) patients with early-stage (metaplastic) breast cancer, of whom (36.5%) underwent BCT versus (63.5%) who underwent MC. They found that when they compared the survival outcomes after both procedures for patients, the results of BCT were better [27]. Christiansen and colleagues (2018) in their population survey on (58,331) women with early invasive breast cancer from (1995) to (2012) in Denmark, concluded that patients treated with BCS had better survival than patients treated with mastectomy [28]. It is worth noting, that BCT has other advantages when compared with the MC approach as a lower rate in terms of postoperative complications and economic burden [29,30]. So based on the supporting growing evidence that BCT is the preferable surgical choice for patients with early breast carcinoma and patients undergoing BCT have perfect outcomes, we recommend through this multicenter comparative study and support this surgical approach, as this type also It makes patients maintain their breasts with a healthy feeling that helps their quality of life, reduces morbidity and thus encourages improvement [31].

REFERENCES

- 1- Alom MZ, Yakopcic C, Nasrin M, Taha TM, Asari VK. Breast cancer classification from histopathological images with inception recurrent residual convolutional neural network. Journal of digital imaging. 2019;32(4):605-17.
- 2- Sankatsing VD, van Ravesteyn NT, Heijnsdijk EA, Looman CW, van Luijt PA, Fracheboud J, den Heeten GJ, Broeders MJ, de Koning HJ. The effect of population-based mammography screening in Dutch municipalities on breast cancer mortality: 20 years of follow-up. International Journal of Cancer. 2017;141(4):671-7.
- 3- Orerah GI. Two to Nine Year Review of Breast Conservation Therapy (BCT) for Breast Carcinoma: Clinico-Pathological Features and Outcomes in a Single Centre in East Africa. Clin Oncol. 2019;4:1580.
- 4- Bray F, Ferlay J, Soerjomataram I, Siegel RL, Torre LA, Jemal A. Global cancer statistics 2018: GLOBOCAN estimates of incidence and mortality worldwide for 36 cancers in 185 countries. CA: a cancer journal for clinicians. 2018 Nov;68(6):394-424.
- 5- Sobri FB, Bachtiar A, Panigoro SS, Ayuningtyas D, Gustada H, Yuswar PW, Nur AA, Putri RC, Widihidayati AD. Factors Affecting Delayed Presentation and Diagnosis of Breast Cancer in Asian Developing Countries Women: A Systematic Review. Asian Pacific Journal of Cancer Prevention: APJCP. 2021 Oct;22(10):3081.
- 6- Pondé NF, Zardavas D, Piccart M. Progress in adjuvant systemic therapy for breast cancer. Nature reviews Clinical oncology. 2019 Jan;16(1):27-44.
- 7- Barrios CH. Global challenges in breast cancer detection and treatment. The Breast. 2022 Mar 1;62:S3-6.
- 8- Chen K, Liu J, Zhu L, Su F, Song E, Jacobs LK. Comparative effectiveness study of breast-conserving surgery and mastectomy in

- the general population: A NCDB analysis. *Oncotarget*. 2015 Nov 24;6(37):40127.
- 9- Kim H, Lee SB, Nam SJ, Lee ES, Park BW, Park HY, Lee HJ, Kim J, Chung Y, Kim HJ, Ko BS. Survival of breast-conserving surgery plus radiotherapy versus total mastectomy in early breast cancer. *Annals of surgical oncology*. 2021 Sep;28(9):5039-47.
 - 10- Morrow M, Van Zee KJ, Solin LJ, Houssami N, Chavez-MacGregor M, Harris JR, Horton J, Hwang S, Johnson PL, Marinovich ML, Schnitt SJ. Society of Surgical Oncology–American Society for Radiation Oncology–American Society of Clinical Oncology consensus guideline on margins for breast-conserving surgery with whole-breast irradiation in ductal carcinoma in situ. *Annals of surgical oncology*. 2016 Nov;23(12):3801-10.
 - 11- Niinikoski L, Leidenius MH, Vaara P, Voynov A, Heikkilä P, Mattson J, Meretoja TJ. Resection margins and local recurrences in breast cancer: comparison between conventional and oncoplastic breast conserving surgery. *European Journal of Surgical Oncology*. 2019 Jun 1;45(6):976-82.
 - 12- Baskin AS, Wang T, Bredbeck BC, Sinco BR, Berlin NL, Dossett LA. Trends in contralateral prophylactic mastectomy utilization for small unilateral breast cancer. *Journal of Surgical Research*. 2021 Jun 1;262:71-84.
 - 13- Najafi M, Neishaboury M, Ghafari N, Haghighat S, Memari F, Kaviani A. Surgeons' Perspectives on Surgery of Breast Cancer in Iran: The Pattern and Determinants. *Archives of breast cancer*. 2015 May 30:58-63.
 - 14- Maloney BW, McClatchy III DM, Pogue BW, Paulsen KD, Wells WA, Barth RJ. Review of methods for intraoperative margin detection for breast conserving surgery. *Journal of biomedical optics*. 2018 Oct;23(10):100901.
 - 15- Maishman T, Cutress RI, Hernandez A, Gerty S, Copson ER, Durcan L, Eccles DM. Local recurrence and breast oncological surgery in young women with breast cancer: the POSH observational cohort study. *Annals of surgery*. 2017 Jul;266(1):165.
 - 16- Christiansen P, Carstensen SL, Ejlersen B, Kroman N, Offersen B, Bodilsen A, Jensen MB. Breast conserving surgery versus mastectomy: overall and relative survival—a population based study by the Danish Breast Cancer Cooperative Group (DBCG). *Acta Oncologica*. 2018 Jan 2;57(1):19-25.
 - 17- Wrubel E, Natwick R, Wright GP. Breast-conserving therapy is associated with improved survival compared with mastectomy for early-stage breast cancer: a propensity score matched comparison using the national cancer database. *Annals of surgical oncology*. 2021 Feb;28(2):914-9.
 - 18- Heiman J. Breast cancer surgery-Aspects of patient-reported outcomes and physical activity. 2021 Nov 15.
 - 19- Bao S, He G. Comparing the Prognoses of Breast-Conserving Surgeries for Differently Aged Women with Early Stage Breast Cancer: Use of a Propensity Score Method. *The Breast Journal*. 2022 Apr 23;2022.
 - 20- Zhou X, Li Y. Local recurrence after breast-conserving surgery and mastectomy following neoadjuvant chemotherapy for locally advanced breast cancer—a meta-analysis. *Breast Care*. 2016;11(5):345-51.
 - 21- Johns N, Dixon JM. Should patients with early breast cancer still be offered the choice of breast conserving surgery or mastectomy?. *European journal of surgical oncology (EJSO)*. 2016 Nov 1;42(11):1636-41.
 - 22- Boyages J. Radiation therapy and early breast cancer: current controversies. *Medical Journal of Australia*. 2017 Sep;207(5):216-22.
 - 23- Blichert-Toft M, Nielsen M, Düring M, Møller S, Rank F, Overgaard M, Mouridsen HT. Long-term results of breast conserving surgery vs. mastectomy for early stage invasive breast cancer: 20-year follow-up of the Danish randomized DBCG-82TM protocol. *Acta oncologica*. 2008 Jan 1;47(4):672-81.
 - 24- Poggi MM, Danforth DN, Sciuto LC, Smith SL, Steinberg SM, Liewehr DJ, Menard C, Lippman ME, Lichter AS, Altemus RM. Eighteen-year results in the treatment of early breast carcinoma with mastectomy versus breast conservation therapy: the National Cancer Institute Randomized Trial. *Cancer: Interdisciplinary International Journal of the American Cancer Society*. 2003 Aug 15;98(4):697-702.
 - 25- Litière S, Werutsky G, Fentiman IS, Rutgers E, Christiaens MR, Van Limbergen E, Baaijens MH, Bogaerts J, Bartelink H. Breast conserving therapy versus mastectomy for stage I–II breast cancer: 20 year follow-up of the EORTC 10801 phase 3 randomised trial. *The lancet oncology*. 2012 Apr 1;13(4):412-9.
 - 26- Wang S, Zhang Y, Yin F, Wang X, Yang Z. Survival Outcomes After Breast-Conserving Therapy Compared With Mastectomy for Patients With Early-Stage Invasive Micropapillary Carcinoma of the Breast: A SEER Population-Based Study. *Frontiers in Oncology*. 2021;11.
 - 27- Zhang J, Yang C, Lei C, Zhang Y, Ji F, Gao H, Yang M, Zhang L, Li J, Zhu T, Li W. Survival outcomes after breast-conserving therapy compared with mastectomy for patients with early-stage metaplastic breast cancer: a population-based study of 2412 patients. *The Breast*. 2021 Aug 1;58:10-7.
 - 28- Christiansen P, Carstensen SL, Ejlersen B, Kroman N, Offersen B, Bodilsen A, Jensen MB. Breast conserving surgery versus mastectomy: overall and relative survival—a population based study by the Danish Breast Cancer Cooperative Group (DBCG). *Acta Oncologica*. 2018 Jan 2;57(1):19-25.
 - 29- Mattingly AE, Ma Z, Smith PD, Kiluk JV, Khakpour N, Hoover SJ, Laronga C, Lee MC. Early postoperative complications after oncoplastic reduction. *Southern medical journal*. 2017 Oct;110(10):660.
 - 30- Kouwenberg CA, Mureau MA, Kranenburg LW, Rakhorst H, de Leeuw D, Klem TM, Koppert LB, Ramos IC, Busschbach JJ. Cost-Utility analysis of four common surgical treatment pathways for breast cancer. *European Journal of Surgical Oncology*. 2021 Jun 1;47(6):1299-308.
 - 31- Grimmett C, Corbett T, Brunet J, Shepherd J, Pinto BM, May CR, Foster C. Systematic review and meta-analysis of maintenance of physical activity behaviour change in cancer survivors. *International Journal of Behavioral Nutrition and Physical Activity*. 2019 Dec;16(1):1-20.